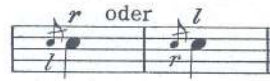


### Kurzer Vorschlag



**28** = ♩ = **Langsam**

*mf*

*p*

*f* 3

*piu f*

*p*

*f*

**29** = ♩ = **Allegretto**

*f*

*pp*

*f*

*p*

*mf*

*p*

*f*

*= ♩ = Marschtempo*

30 *f sfz p f*

*= ♩ = Allegro*

31 *f p piú p mf p f f ff fz fz fz fz p piú p pp sempre p ff ff*

# Orchesterstudien für kleine Trommel

## Marciale maestoso Die diebische Elster

Rossini

ff *trm* p *trm* *trm* f

und so weiter ff p

1 2 3 4 5 6 7 8 p f ff pp Die Triolen im pp

deutlich schlagen pp und so weiter

## Fra Diavolo

### Allegro maestoso

D. F. E. Auber

ff f

dim. mf poco a poco p dim.

pp PPP

Allegro f

Musical score for the first section, consisting of six staves. The first staff has a treble clef and a key signature of one sharp (F#). The second staff is marked **Presto** and includes a time signature change to 12/8. The third staff has a bass clef and a key signature of one sharp. The fourth staff has a treble clef and a key signature of one sharp, with first fingerings (1) indicated above the first and fifth measures. The fifth staff has a treble clef and a key signature of one sharp, with a fermata over the final measure. The sixth staff has a bass clef and a key signature of one sharp, ending with a fermata.

### Die Macht des Schicksals

G. Verdi

Musical score for the section titled "Die Macht des Schicksals", consisting of five staves. The first staff is marked **Più mosso** and begins with a dynamic marking of **f**. It includes performance instructions: *dim.*, *rall.*, and *più rall.*. The second staff is marked **Poco meno** and begins with a dynamic marking of **p**. The third staff begins with a dynamic marking of **pp** and includes a dynamic marking of **f** later in the staff. The fourth staff is marked **Più mosso** and begins with a dynamic marking of **f**. The fifth staff continues the musical notation.

Trommel

طبل

Musical score for the first section, consisting of six staves. The notation includes various rhythmic patterns, triplets, and dynamic markings such as *mf*, *p*, *pp sempre*, *dim.*, and *ppp*.

Bolero für Trommel

Musical score for the second section, "Bolero für Trommel", starting at measure 22. It features a tempo marking "Schnell = ♩ =", a 3/4 time signature, and dynamic markings including *ff*, *pp*, *f*, *p*, *mf*, *crescendo*, *f*, *sfz*, and *ppp*.

# Trommel-Tanz

**Presto**

20

*p* *f* *sfz* *p* *ff* *p* *ff* *sfz sfz*

## Übung in dreiteiligen Taktarten

**Moderato**

21

*p* *f* *p* *p* *f* *f*